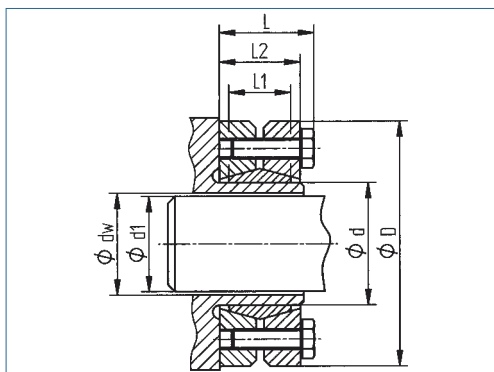


Shrink Disc

optional
nickel-plated version
optional full stainless
steel version



transmittable torque	medium
surface pressure on hub	medium
self-centering	no
height D/d	medium
overall length	medium

Order Code **KBS 19 - 165 x 290**
Type Ød ØD

Recommended finishing tolerances of contact surfaces are: shaft d h 9

Hollow Ød mm	Shaft Ø dw mm	Outer ØD mm	Torque T Nm	Dimensions				Fitting Tolerance max. mm	Surface pressure on	Screws			Mass kg
				L mm	L1 mm	L2 mm	Shaft Pw N/mm²		No.	ISO 4017	TA Nm		
14	10	38	40	18.5	10	15	0.014	154	4	M5x12	3	0.10	
	50		191										
	65		243										
16	12	41	65	20.5	12	17	0.014	108	5	M5x12	3	0.14	
	80		151										
	95		190										
18	14	44	85	20.5	12	17	0.014	172	4	M5x12	4	0.15	
	100		205										
	130		233										
20	15	46	110	20.5	12	17	0.017	205	5	M5x12	4	0.17	
	130		232										
	150		258										
21	16	50	180	23.5	14	20	0.017	220	6	M5x12	5	0.23	
	220		245										
	270		275										
24	19	50	220	23.5	14	20	0.017	189	6	M5x18	4	0.22	
	280		209										
	330		228										
30	24	60	350	25.5	16	22	0.017	159	7	M5x18	4	0.33	
	400		172										
	470		184										
36	28	72	730	27.5	18	23.5	0.032	232	5	M6x20	12	0.52	
	860		240										
	880		250										
38	29	72	710	28,5	19	24,5	0,032	198	6	M6x20	12	0.5	
	735		205										
	760		211										
40	30	72	770	28,5	19,0	24,5	0,032	216	6	M6x20	12	0.5	
	800		223										
	825		230										
44	32	80	1200	29.5	20	25.5	0.032	225	7	M6x20	12	0.64	
	1400		235										
	1500		244										
48	36	80	1350	29.5	20	25.5	0.032	222	7	M6x20	12	0.60	
	1450		236										
	1530		248										