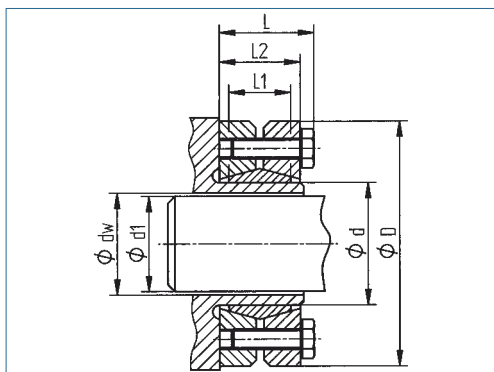


Shrink Disc

optional
nickel-plated version
optional full stainless
steel version



transmittable torque	medium
surface pressure on hub	medium
self-centering	no
height D/d	medium
overall length	medium

Order Code **KBS 19 - 165 x 290**
Type Ød ØD

Recommended finishing tolerances of contact surfaces are: shaft d h 9

Hollow Ød mm	Shaft Ø dw mm	Outer ØD mm	Torque T Nm	Dimensions				Fitting Tolerance max. mm	Surface pressure on		Screws		Mass kg
				L mm	L1 mm	L2 mm	Shaft Pw N/mm²		No.	ISO 4017	TA Nm		
140	95	230	18600	68	46	60.5	0.07	190	10	M12x45	100	10	
	21600		199										
	24900		208										
155	105	265	25400	72	50	64.5	0.07	195	12	M12x50	100	15	
	29000		203										
	32800		211										
165	115	290	38900	81	56	71	0.07	223	8	M16x55	250	22	
	43600		230										
	47600		231										
175	125	300	42900	81	56	71	0.08	208	8	M16x55	250	22	
	47800		215										
	53100		221										
185	135	330	60000	96	71	86	0.09	197	10	M16x65	250	37	
	66400		202										
	73100		208										
195	140	350	75600	96	71	86	0.09	231	12	M16x65	250	41	
	90600		241										
	98700		245										
200	150	350	87000	96	71	86	0.09	231	12	M16x65	250	41	
	94800		236										
	103000		240										
220	160	370	110000	114	88	104	0.09	208	15	M16x80	250	54	
	120000		212										
	129000		216										
240	170	405	146000	121.5	92	109	0.09	233	12	M20x80	490	67	
	168000		239										
	190000		243										
260	190	430	197000	132.5	103	120	0.10	225	14	M20x90	490	82	
	224000		231										
	254000		237										
280	210	460	260000	146.5	114	134	0.10	220	16	M20x100	490	102	
	292000		225										
	327000		230										